

Pressure-/Temperaturelogger P-LOG3023



The P-Log3023 measures and records simultaneously pressure and temperature in gases or water. It is available in several different ranges from 1bar to 100 bar. Depending on the type of sensor applied the logger can either log gauge or absolute pressure. An integrated temperature sensor is used for automatic temperature compensation of the pressure reading. Temperature is also recorded as a separate parameter.

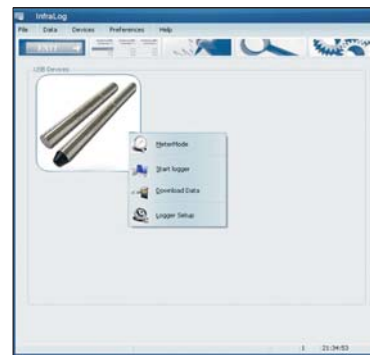
Compact design

The rugged enclosure from stainless steel houses both the sensors, the battery and the storing electronic. Having very small dimensions of 25mm and length 215mm the P-LOG3023 is IP68 protected and can be supplied with a couple of threads for process integration. At time of order it can be selected between 1/4" BSP, 1/8" NPT, 1/4" NPT and 7/16 UNF.

Unattended for long measuring periods

Up to 4 million readings can be recorded with a 16 bit resolution and the non volatile flash memory ensures that the readings are safe even if the battery fails. Because of its low power consumption the logger can work for up to 6 years with one battery, which can easily be exchanged by the user himself.

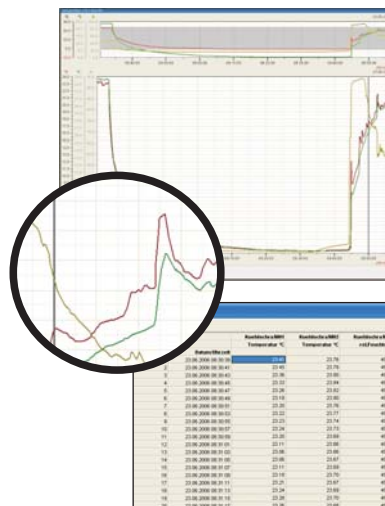
Intuitive software



InfraLog for Windows allows you to set-up the logger i.e. start-day and time, interval and run description.

You may set an interval of 0,05 seconds to 24 hours as well as a run description (384 characters) and a delaytime to allow for delays in deployment.

After the readings have been taken download them via USB-port of your PC and export them to a csv-file for import with excel or other software.



Optional there are two more versions available: "InfraLog light" with advanced graphical functions, including zoom and run-combination or "InfraLog enhanced" with further functionality such as statistics, formular editor (calculated channels) and more.

type	range [kPa]	Overload pressure ¹ [kPa]	resolution	pressure type ²
P-LOG3023-100	100	200	2 Pa	A,R
P-LOG3023-200	200	400	4 Pa	A,R
P-LOG3023-700	700	1300	12 Pa	A,R
P-LOG3023-1500	1500	2700	25 Pa	A,R
P-LOG3023-2000	2000	4000	35 Pa	A,R
P-LOG3023-3500	3500	5800	60 Pa	A,R
P-LOG3023-7000	7000	10000	120 Pa	R
P-LOG3023-10000	10000	12000	160 Pa	R

Linearity&hysteresis:	0,1% v. MB	Mechanical	
Response time ³ T90:	0,1 ms	Dimensions:	D= 25mm L= 215mm
Longterm-stability ⁴ (offset and span):	0,1% of range	Threads:	14" BSP, 1/8" NPT, 1/4" NPT , 7/16 UNF
Temperature		Weight:	approx. 430g
Range:	-20...+105°C	Battery:	LiTh-12 Lithiumbattery
Temperature compensation:	0...70°C	Memory capacity:	4 mio readings
Temperature limit for electronic	-20...+80°C		
Accuracy:	+/-0,2°C		
Resolution:	0,003°C		

1 If the overload pressure is exceeded (even only shortly) this may destroy the sensor .

2 A= absolute pressure, R= gauge pressure

4 Response to change for von 0 kPa to end of range

5 temperature compensated range 0...70°C.
max logger temperature +80°C

P-LOG3023 - xxx - A,R - 1,2...4

